

LINDSEY STEWART & MARK LENNON MEMORIAL FUND

LIGHTHOUSE PROPOSAL

JULY 2014



PIERMONT VILLAGE HALL
TUESDAY JULY 15TH, 2014



PROPOSAL OF A LIGHTHOUSE DONATION FROM THE STEWART-KOSIK AND LENNON FAMILIES WITH SUPPORT AND OVERSIGHT BY THE ROCKLAND COMMUNITY FOUNDATION

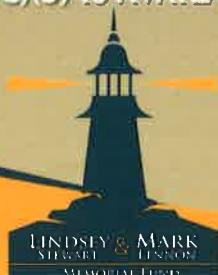
THE GOAL OF OUR FUND IS TO BUILD A LIGHTHOUSE FOR ROCKLAND COUNTY TO AID BOATERS NAVIGATING THE HUDSON RIVER. ADDITIONALLY, FUNDS WILL BE PROVIDED TO MEANINGFUL CAUSES IN LINDSEY & MARKS MEMORIES WITHIN PIERMONT & ROCKLAND COUNTY, SUCH AS BOATING SAFETY COURSES AND OTHER CHARITABLE ENDEAVORS. AS SUCH, WE HAVE PARTNERED WITH THE ROCKLAND COMMUNITY FOUNDATION AS OF MARCH 5, 2014 AND ARE NOW CONSIDERED A NON-PROFIT FUND. ALL CONTRIBUTIONS MADE AFTER SUCH DATE IS NOW TAX DEDUCTIBLE AND

A COPY OF OUR 501(C)(3) IS AVAILABLE UPON REQUEST.



For Now • For Ever • For Rockland

WWW.ROCKLANDGIVES.ORG



FUNDS RAISED WILL BE ADDED TO THE LINDSEY STEWART AND MARK LENNON MEMORIAL FUND, A COMPONENT OF THE ROCKLAND COMMUNITY FOUNDATION, A 501(C)(3) FUND



LINDSEY & MARK STEWART LENNON

— MEMORIAL FUND —
PO BOX 982 PEARL RIVER, NY 10965

WWW.LINDSEYANDMARKMEMORIALFUND.ORG

"The Goal of our foundation is to build a lighthouse for Rockland County and to serve as a navigational aid to boaters on the Hudson River."

On the evening of July 26, 2013, Lindsey and Mark were tragically killed on what the world has remembered as the "Tragedy on the Hudson." As the world watched the story unravel, family and friends stood along the river waiting for their loved ones to be found. Every second seemed like a lifetime; a day that none of us will forget. Regardless of the story and catchy headlines that the media has turned our devastation into, we have persevered and are trying to ensure that what happened to Lindsey and Mark will not happen again.

We have spent the last 12 months grieving the deaths of our loved ones. In doing so, we've tried to redirect our sadness into a positive place- a place in which we can contribute to the community.

The goal of our foundation is to build a lighthouse for Rockland County to aid boaters navigating the Hudson River. Additionally, funds will be provided to meaningful causes in their memories within Rockland County such as boating safety courses and other charitable endeavors. As such, we have partnered with the Rockland Community Foundation as of March 5, 2014 and are now considered a non-profit, 501(c)(3) tax-exempt fund.

All contributions made after such date are now tax deductible (Tax ID #76-0729108) and a copy of our 501(c)(3) is available upon request.



Lake Ray Hubbard, Rockwall Texas lighthouse



TRAGEDY ON THE HUDSON

"We feel having the opportunity to shed that light, that beacon of light, on the river not only in their memory, but to help others that may come after them, so it will never be dark again."



As part of the Lindsey Stewart & Mark Lennon Memorial fund safety program initiative, we are committed to water safety within Rockland County and especially in the local marinas of Piermont NY. We have contacted the United States Coast Guard and National Safe Boating Council to help educate boaters of safe and responsible boating. We are also working closely with our partner organizations to create a larger grassroots network and create a more consistent campaign message. We are hoping these collaborative efforts will increase awareness about the importance of always wearing life jackets while on the water.



Mustang Water Rescue Kit

In an effort to minimize future river accidents we are also committed to installing water safety and emergency rescue equipment at strategic locations at the Piermont Pier. This would include, but not limited to; a Mustang Water Rescue kit, (2) 75-100 ft throw bags, Flare Gun, Air Horn, Hypothermia blankets ect.

Mustang Water Rescue Kit

Water Rescue kit for safe, quick rescue by first responders. You're first on the scene. There are victims in the water and time is running out... what can you do? The first person on the scene is not always equipped to execute a safe water rescue. Without the proper equipment and training, the first responder may not be able to execute a safe rescue, greatly reducing the probability of the victim's survival. In an emergency, seconds count. The Mustang Survival Water Rescue Kit contains everything the first responder needs to conduct a basic emergency water rescue: 1 M.I.T. 100 Inflatable PFD, 1 Rescue Stick and 1 Throw Bag all in a heavy duty storage case. Complete with quick reference instruction sheet and desiccant. Recommend for: Industrial Marine, Law Enforcement, Public Safety, Aviation, Land 1 M.I.T.100 Inflatable PFD (manual) to protect yourself (USCG Type V (Commercial



Lindsey Stewart & Mark Lennon

Use); Type III (Recreational Use) 1 MRD100 Rescue Stick (automatic) to stabilize the victim Rescue Stick has 35lb of buoyancy providing emergency flotation for multiple victims 1 MRD075 Throw Bag to retrieve the victim 1 customized heavy duty drop tested, impact resistant, air and water tight protective case. This case meets military, ATA and federal specifications.



Emergency Water rescue equipment cabinet installed at strategic locations at Piermont Pier.

United States Coast Guard

Private aid to Navigation (PATON) approval for Piermont Pier

You are logged on as CHUDAK HQ

PRIVATE AIDS TO NAVIGATION FOR - CG ANT NEW YORK

ONE PAGE PATON VERIFICATION REPORT ?

Update Aid Number / Aid Name (without changing status)

PATON NAME: Piermont Light
LLNR: 37691.00
AID NUMBER: 100118128647
CLASS: 2
ANNUAL VERIFICATION: No
OPFAC ASSIGNMENT: 41920

Location, Depth and PATON Type

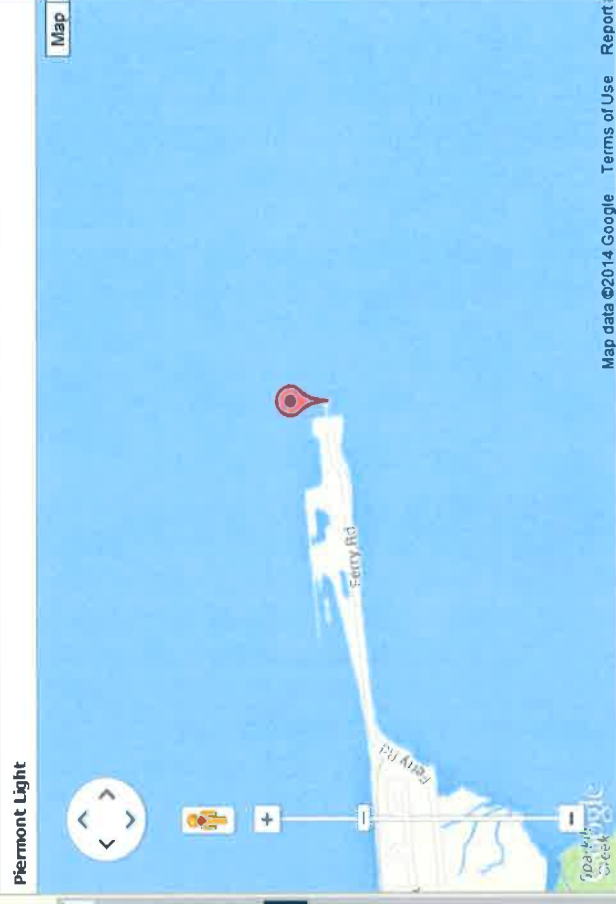
LATITUDE: 41 02 35.10 N
LONGITUDE: 73 53 45.54 W
GENERAL LOCALITY: Hudson River, Piermont Pier, Piermont NY
PATON TYPE: Fixed/Lighted
PATON PURPOSE: OTHER - explain in Comments.
PATON CATEGORY: Light
AID COLOR:
DEPTH AT DATUM: 8

Fixed PATON.....

AID STRUCTURE: TOWER
STRUCTURE MATERIAL: METAL

Lighted PATON.....

LIGHT CHARACTERISTIC: FL
LIGHT PERIOD: 5s
LIGHT COLOR: WHITE
HEIGHT OF LIGHT: 30
SOUND SIGNAL TYPE:
ACTION REQUESTED: Annual
AID DURATION: Set: Pull:
DATE LAST VERIFIED:
DISTRICT/DIVISION/FLOTILLA: 014/10/



We have already spoken with the Coast Guard regarding a series of “hypothetical” coordinates and the Coast Guard provided us with pre-approval

The Lindsey Stewart and Mark Lennon Memorial Fund partnered with the Rockland Community Foundation in an effort to do more positive undertakings within Rockland. This local charity does more for what matters most- a sense of community and foundation for those living in Rockland.



Building a Better Rockland

The Rockland Community Foundation is a charitable organization committed to building a better Rockland. As the link between those who want to give and those people and organizations who are in need, we are working to improve the quality of life in our region.

Whether through grants, scholarships, disaster response, or our position as a community leader addressing pressing needs, we're dedicated to improving life in the county we all call home.

To donors, we provide a simple yet effective means to achieve both their charitable and tax savings goals, allowing them to address specific issues through funds that they create and we steward.

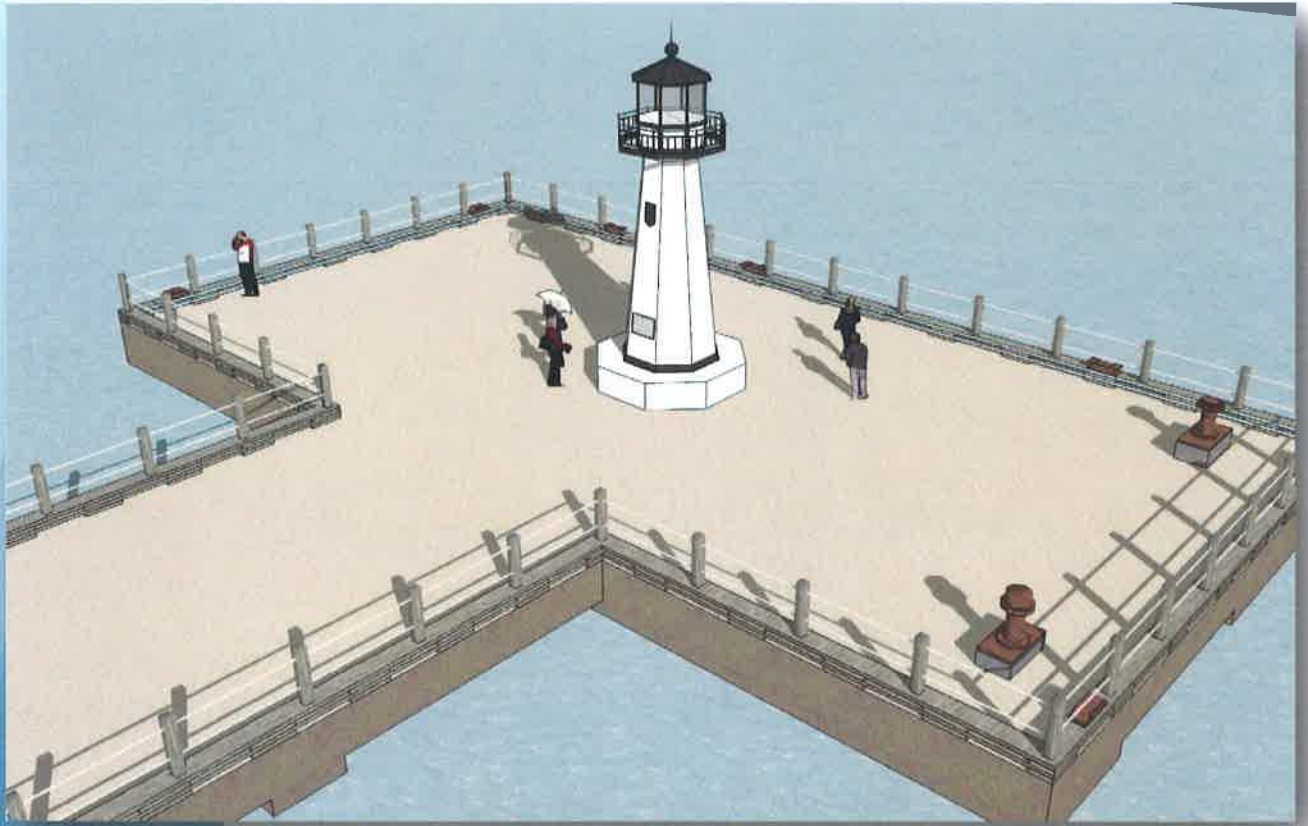
To charitable organizations, we are a source of grant funding for programs that enable them to enhance the quality of life for those they touch.

To students, we provide scholarships that will help support their future educational goals.

To honor a loved one, by establishing a memorial fund with the Foundation in support of a cause that was important to them, you celebrate their life and keep their memory alive in perpetuity.

In times of crisis, we are the county's advocate, working with local individuals and businesses to channel their donor dollars for recovery funding at home.

We're here to help, and we are making a difference: for now, for ever, for Rockland.





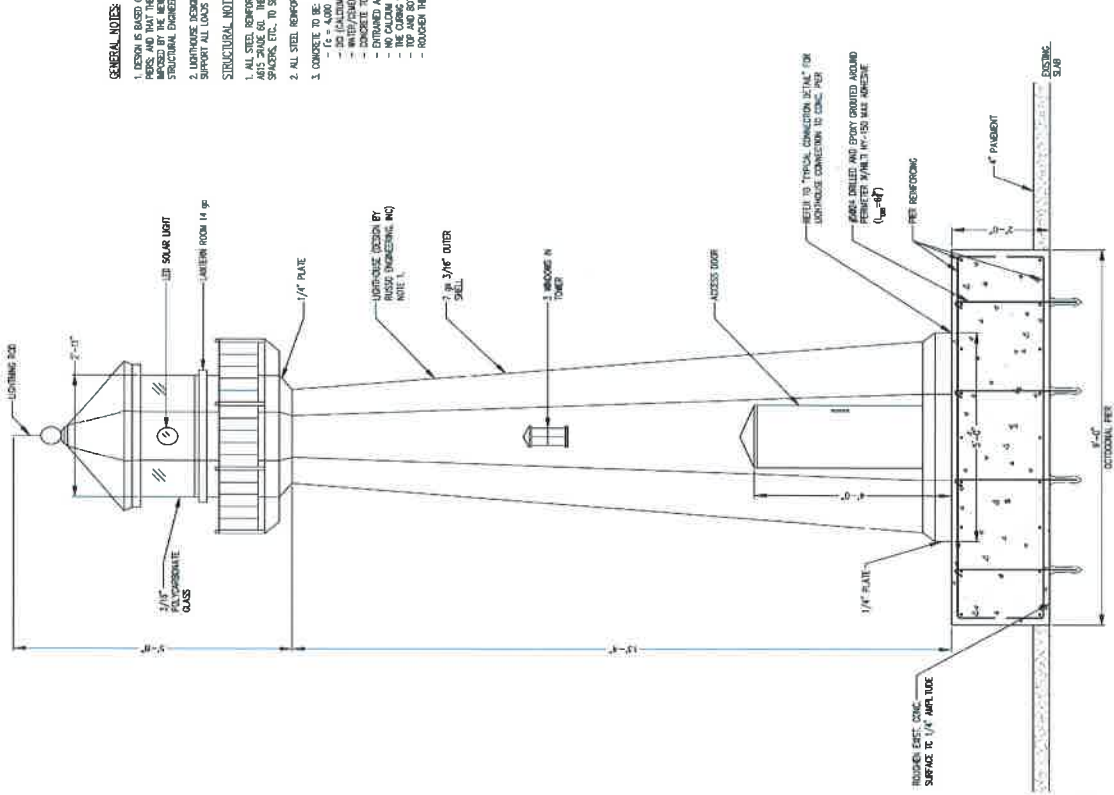
View from the west looking East

Lighthouse Specifications:

- All steel 7 Gage (3/16") steel construction tower
- Pre-engineered polycarbonate unbreakable glass Copula lantern room
- Weather resistant, epoxy polyurethane paint. Maintenance free up to 20 years.
- LED Solar Fresnel replica light



Northern horizon view with TZ Bridge in background



1 LIGHTHOUSE ELEVATION
SCALE: 3/4"=1'-0"

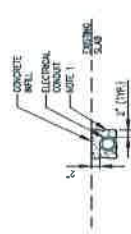
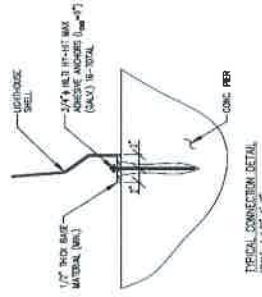
NOTES:
1. LIGHTHOUSE DESIGN BY PISCIS ENGINEERING, INC., AND AS PER THEIR NOTES. ALL STEEL CONSTRUCTION EROD-RESISTANT PAINT. ALL SURFACES SANGRASTED. WORKING DIMENSIONS ARE APPROXIMATE. NOT FINAL DESIGN JUST A REFERENCE.

GENERAL NOTES:

- DESIGN IS BASED ON THE ASSUMPTION OF AN EXISTING 30" TO 36" THICK CONCRETE SLAB SETTING ON PIER, AND THAT THE EXISTING SLAB AND PIERS ARE STRUCTURALLY ADEQUATE TO SUPPORT THE LOADS IMPOSED BY THE NEW STRUCTURE. CONTRACTOR TO VERIFY THE EXISTING STRUCTURE AND NOTIFY STRUCTURAL ENGINEER FOR REVIEW.
- LIGHTHOUSE DESIGN ENGINEER TO PROVIDE CALCULATIONS SHOWING THAT THE STRUCTURE IS ADEQUATE TO SUPPORT ALL LOADS IMPOSED ON IT, INCLUDING THE CONNECTION TO THE CONCRETE PIER.

STRUCTURAL NOTES:

- ALL STEEL REINFORCEMENT SHALL HAVE AN ULTIMATE TENSILE STRENGTH OF 80,000 PSI AS PER ASTM A615 GRADE 60. THE CONTRACTOR SHALL TURNISH AND INSTALL ALL THE CHAINS, REMAINS, TIES, SPACERS, ETC., TO SECURE AND SUPPORT THE REINFORCING WHILE PLACING THE CONCRETE.
- ALL STEEL REINFORCING TO BE EPOXY COATED.
- CONCRETE TO BE:
 - $f_c = 4,000 \text{ psi}$ AT 28 DAYS
 - 502 (CALCEM) AIR-ENRICHED CONCRESSION INHERENT (4.0 CAL/IN²)
 - MINIMUM 28 DAY COMPRESSIVE STRENGTH OF 4,000 PSI
 - CONTRACTOR TO PROVIDE PROOF OF TESTS (1.0 TEST PER FOOT RUN)
 - ENTRAINED AIR AT 6% \pm 1.
 - NO CALCIUM CHLORIDE IS ALLOWED AS AN ADDED ADJUTANT.
 - NO CALCIUM CHLORIDE IS ALLOWED AS AN ADDED ADJUTANT.
 - THE CONTRACTOR SHALL PROVIDE PROOF OF TESTS TO THE ENGINEER.
 - TOP AND BOTTOM MAT REINFORCING TO BE 10#10 EACH WAY.
 - ROUNDEN THE TOP OF EXISTING SLAB UNDER THE PROPOSED PIER TO 1/4" AMPLITUDE.



THERMAL TRENCH CONNECTION DETAIL
SCALE: 3/4"=1'-0"

- NOTES:
- SAFETY EXISTING SLAB AS SHOWN AS SHOWN. ROUGHEN CONCRETE SURFACE TO 1/4" AMPLITUDE.
 - CONTRACTOR TO DETERMINE EXACT LOCATION OF TRENCH AND NOTIFY STRUCTURAL ENGINEER FOR REVIEW.



DRAWING TITLE:

EXISTING SITE PLAN
ELEVATION, NOTES
AND DETAILS

PROJECT #: 0001

SCALE: AS NOTED

SEAL:

DRAWN BY:

CHECKED BY:

SHEET NO.:

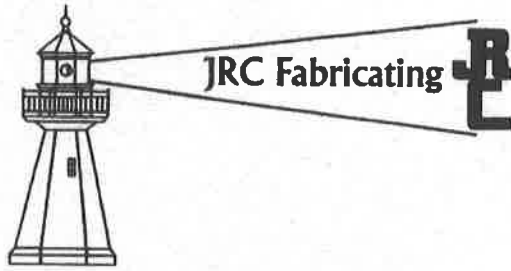
PROPOSED LIGHTHOUSE

PIERMONT PIER

PIERMONT, NEW YORK

LINDSEY & MARK
STEWART LENNON
MEMORIAL FUND

S-



8539 Ronda Drive
Canton, MI 48187-2003

Phone: 734-459-6711
Fax: 734-459-6712

Email: jrcfab@sbcglobal.net
Web: jrcfablighthouses.com

This proposal from JRC Fabricating in Canton, Michigan offers our services for the purpose of designing and fabrication of a memorial lighthouse as per request for the Lindsey Stewart and Mark Lennon Memorial project on the Hudson River. What we are proposing is one of our all steel, real to form and functional 19th Century style lighthouses approximately 20ft high with all octagon geometry. The tower built from 7ga (3/16) thick steel and the lantern room cupola from 14ga (3/32) all steel construction with unbreakable clear polycarbonate windows. Our lighthouse designs are pre-engineered to withstand all weather conditions and are maintenance free for 20 plus years. We use the best coatings and paint finishes ensuring this. Our lighting options are units that meet all potential site requirements from rotating units to stationary lens units or a battery solar LED flashing beacon units. They can be used as true navigational aids if the application requires it. We also provide foundation recommendations that work with most local code requirements.

With a side note: with the proposed site for the lighthouse being the Piermont Pier, the impact at that location could have far reaching benefits for the community of Piermont. The history and redevelopment in the area could lend itself to a greater purpose for having a lighthouse at that site front and center as a tragedy has struck and a vision of a memorial lighthouse was born. The proper site with the best and most long lasting impact, like the Piermont Pier, is vital. The Piermont community will benefit greatly as being its host. As with our lighthouse history in Michigan, many tragedies have struck in dangerous waters of the Great Lakes with the loss of ships and crews in the 19th Century. Lighthouses were then built at these sites to become navigational aids but also as symbols, in a sense, monuments and reminders of dangers unseen. Towns and cities have grown around these silent sentinels and stand out as important destination spots. Old or new, lighthouses have positive affects. Piermont and its history with a lighthouse memorial is a good fit. Out of tragedy comes renewal.

One testimonial comes from a lighthouse project we did for the city of Rockwall, Texas in 2007. The impact it made and is still having is immeasurable. It is the go to place for that region. What are the possibilities and legacy in an area like Piermont with its rich maritime history? Our proposals do not usually have side notes, but this case warrants a closer look. We build real lighthouses for real circumstances with long lasting sustainability.

This is a preliminary proposal – a broad view. A lighthouse's birth through its design cannot be known until the site is selected. Once that is known, more details can be created and presented. We offer all our services in the pursuit of this process.

Sincerely,

James Croll

JRC Fabricating • Lighthouse Fabricators • Custom Steel Fabrications



Above: Solar Powered 6x6 posts to be installed at each corner of existing Pier.

Also above: Solar powered LED waterproof "Puck" lighting illuminating the apron approach to Pier Bulkhead.



Left: 6x6 wood posts cut into existing wood curb with 1 ½ inch marine grade rope to serve as perimeter fencing. Allowing a hook rope for any vessel's or safety programs to easily get on to or off of the pier

Memorial Pavers & Stamped Asphalt pavement surface treatment



Stamped Asphalt pavement would help address the condition of the existing surface of the Pier by also adding an aesthetic compliment to the entire project.

Cost advantages over alternatives such as brick, stone or stamped concrete are significant. Quick installation, durability, easy maintenance and design flexibility make the product of choice for many projects.





Engraved brick fundraising is ideal for campaigns of every type and scope. Name by name, brick by brick, a bricks fundraiser tangibly demonstrates the concept that every single donor makes a difference. We would like for the entire village of Piermont and Rockland County to be a part of this very unique project.

From personalized bricks that allow donors to literally put their names on a project, to commemorative bricks that honor loved ones, using engraved bricks for fundraising will generate greater community involvement. Best of all, an engraved bricks fundraiser creates visible, measureable success.

In addition to bringing heightened appreciation of the Piermont Pier and the Lighthouse project, a memorial paver campaign would bring additional financial funding to the Piermont Village Parks department and in turn bring increase foot traffic to the village of Piermont, the Pier and the surrounding businesses, restaurants ect.

Notes & Comments



Lindsey Stewart & Mark Lennon Memorial Fund Lighthouse Proposal

Proposal of a Lighthouse donation from the Stewart-Kosik and Lennon families with support and oversight of the Rockland Community Foundation



Lindsey Stewart & Mark Lennon Memorial Fund

PO Box 892
Pearl River, NY 10965

www.lindseyandmarkmemorialfund.org



Rockland Community Foundation

PO Box 323
New City, NY 10956

www.rocklandgives.org

